

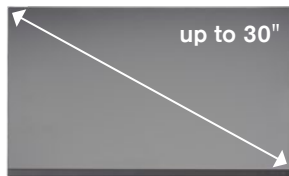
## Modularity. Flexibility. Simplicity.

Innovative's modular display system, Staxx™, is a completely configurable pole based system that supports up to six monitors.



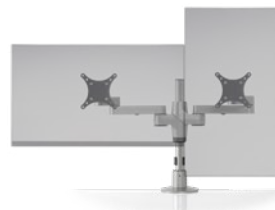
### Scalable Solution

*Staxx™ is easy to install and reconfigure, more monitors can be added by simply stacking more of the same parts on top of each other.*



### Large Screen Sizes Welcome

*Staxx™ is capable of mounting three monitors, up to 30" wide, side-by-side.*



### Independent Monitor Adjustment

*Flexible extension arms allow you to position the monitors for your perfect viewing angle.*



### Small Footprint, Big Capabilities

*Designed for modularity, Staxx™ can accommodate up to six monitors using a single mount.*



# STAXX™ STANDARD

Staxx™ Standard models shown with 24", 16:9 monitor(s).



## STX-01S

Single Mount

### AVAILABLE MODELS

**STX-01S** Supports a monitor up to 30 lbs (13.6 kg), 50" & under



## STX-11S

1 over 1 Monitor Mount

### AVAILABLE MODELS

**STX-11S** Supports up to 20 lbs (9.0 kg) per monitor, 30" & under

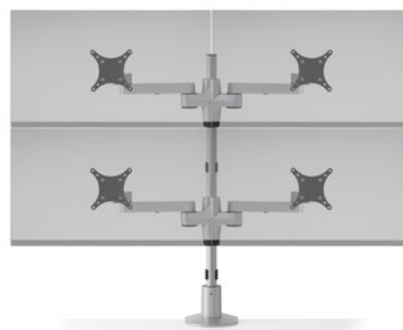


## STX-02S

Dual Monitor Mount – Standard

### AVAILABLE MODELS

**STX-02S** Supports up to 20 lbs (9.0 kg) per monitor, 24" & under

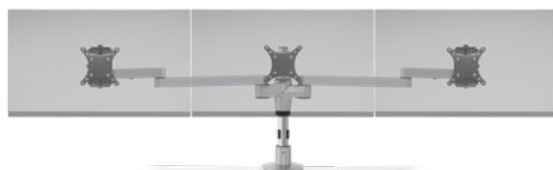


## STX-22S

2 over 2 Monitor Mount – Standard

### AVAILABLE MODELS

**STX-22S** Supports up to 15 lbs (6.8 kg) per monitor, 24" & under

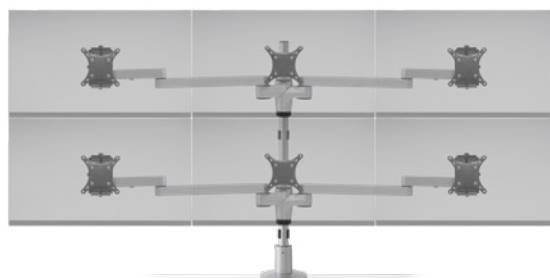


## STX-03S

Triple Monitor Mount – Standard

### AVAILABLE MODELS

**STX-03S** Supports up to 15 lbs (6.8 kg) per monitor, 24" & under



## STX-33S

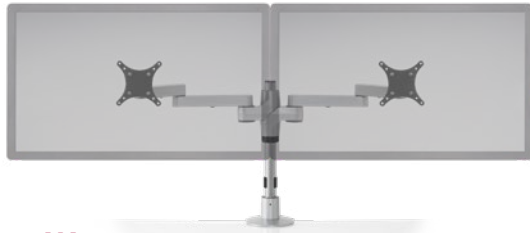
3 over 3 Monitor Mount – Standard

### AVAILABLE MODELS

**STX-33S** Supports up to 10 lbs (4.5 kg) per monitor, 24" & under

## STAXX™ WIDE

Staxx™ Wide models shown with 27", 16:9 monitors.

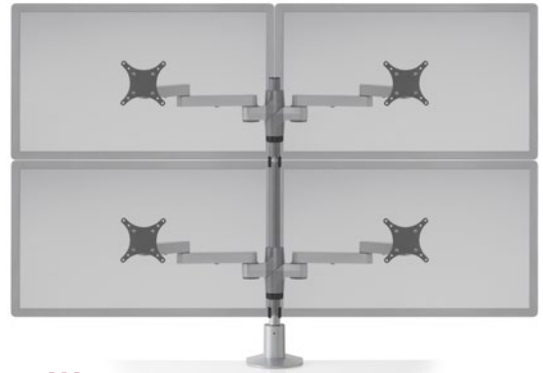


### STX-02W

Dual Monitor Mount – Wide

#### AVAILABLE MODELS

**STX-02W** Supports up to 20 lbs (9.0 kg) per monitor, 24" - 30"

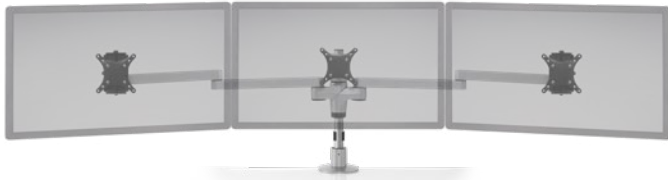


### STX-22W

2 over 2 Monitor Mount – Wide

#### AVAILABLE MODELS

**STX-22W** Supports up to 15 lbs (6.8 kg) per monitor, 24" - 30"

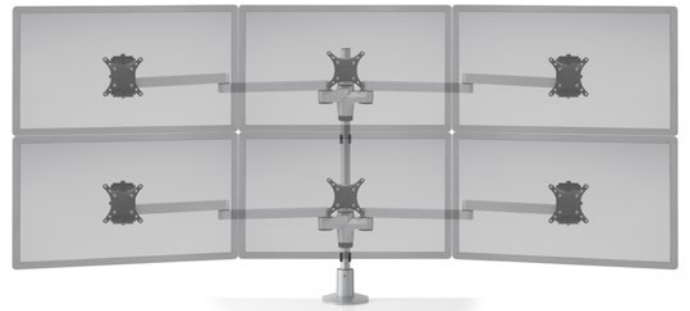


### STX-03W

Triple Monitor Mount – Wide

#### AVAILABLE MODELS

**STX-03W** Supports up to 15 lbs (6.8 kg) per monitor, 24" - 30"



### STX-33W

3 over 3 Monitor Mount – Wide

#### AVAILABLE MODELS

**STX-33W** Supports up to 10 lbs (4.5 kg) per monitor, 24" - 30"

## ARTICULATING ARMS

Staxx™ Articulating Arms models shown with 24", 16:9 monitor(s).



Dual Articulating Monitor Mount

#### AVAILABLE MODELS

<b>STX-450*</b>	Supports 10-23 lbs (4.5-10.4 kg) per monitor, 27" & under
<b>STX-500</b>	Supports 2-13 lbs (0.9-5.8 kg) per monitor, 27" & under
<b>STX-600</b>	Supports 5-17 lbs (2.2-7.7 kg) per monitor, 27" & under
<b>STX-800</b>	Supports 7.5-25 lbs (3.4-11.3 kg) per monitor, 27" & under
<b>STX-1000</b>	Supports 12-25 lbs (5.4-11.3 kg) per monitor, 27" & under



Articulating Monitor + Laptop Mount

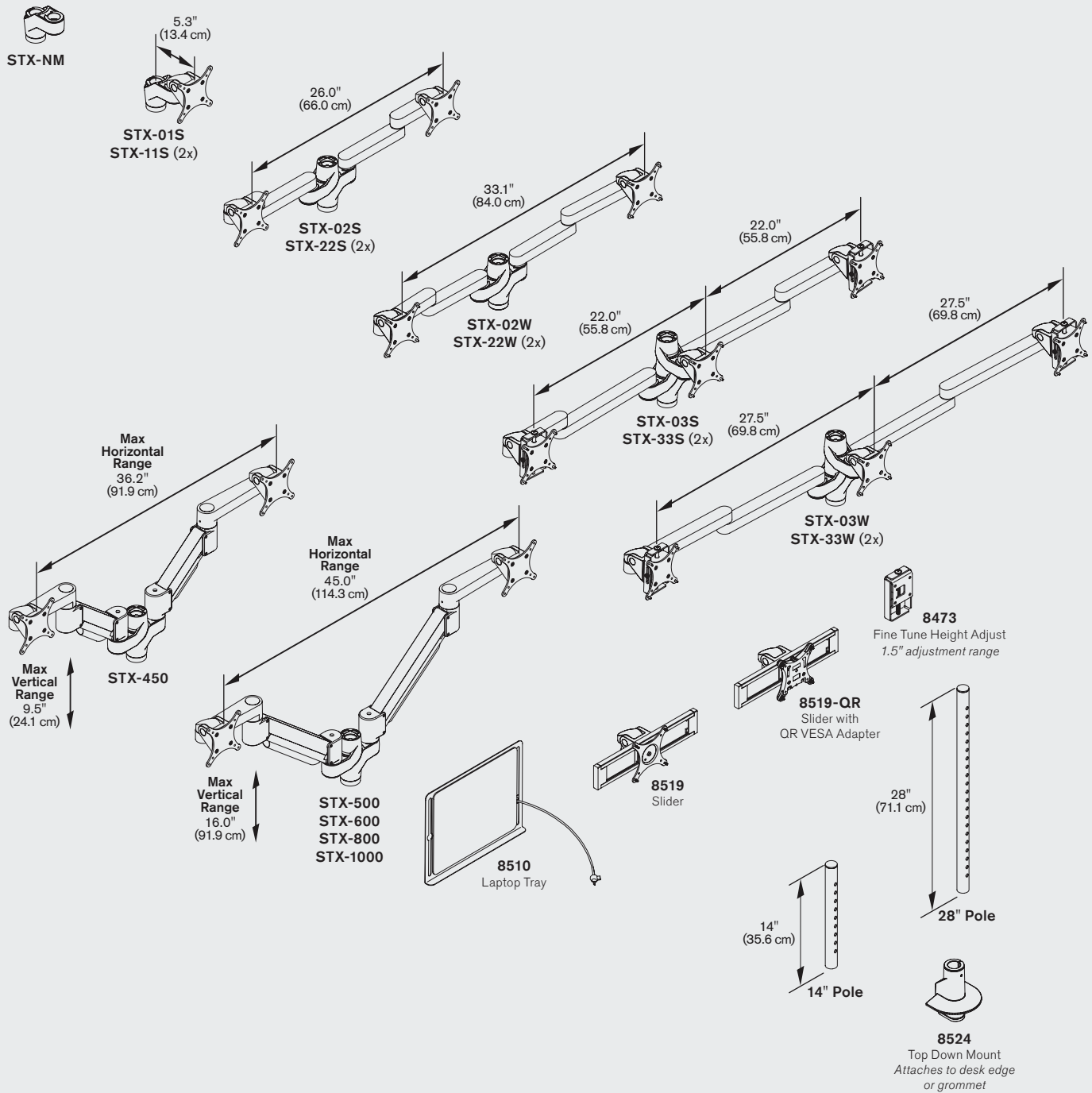
#### AVAILABLE MODELS

<b>STX-450-8510*</b>	Supports a 10-23 lb (4.5-10.4 kg) monitor, 27" & under and a 3 - 13.5 lb (1.4 - 6.1 kg) laptop
<b>STX-500-8510</b>	Supports a 2-13 lb (0.9-5.8 kg) monitor, 27" & under and a 3 - 13.5 lb (1.4 - 6.1 kg) laptop
<b>STX-600-8510**</b>	Supports a 5-17 lb (2.2-7.7 kg) monitor, 27" & under and a 3 - 13.5 lb (1.4 - 6.1 kg) laptop
<b>STX-800-8510</b>	Supports a 7.5-25 lb (3.4-11.3 kg) monitor, 27" & under and a 3 - 13.5 lb (1.4 - 6.1 kg) laptop
<b>STX-1000-8510</b>	Supports a 12-25 lb (5.4-11.3 kg) monitor, 27" & under and a 3 - 13.5 lb (1.4 - 6.1 kg) laptop

\* STX-450 and STX-450-8510 uses our 3500 short-reach articulating arm, see page 4 for more information.

\*\* Available with our HD tilter for smoother adjustment, order STX-600-8510-HD.

## CAPABILITIES



## ACCESSORIES

<b>STX-NM</b>	Stackable Mount	<b>8519-QR</b>	Slider w/QR VESA
<b>8510</b>	Laptop Tray	<b>9118-9112</b>	4" Extension Arm
<b>8473</b>	Height Adjust Adapter	<b>9118-9130</b>	8.5" Extension Arm
<b>8519</b>	Slider	<b>9118-12</b>	12" Extension Arm

## FINISHES

FLAT WHITE | color code: **248**SILVER | color code: **124**VISTA BLACK | color code: **104**